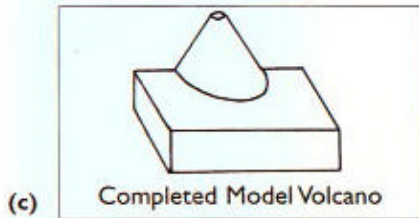
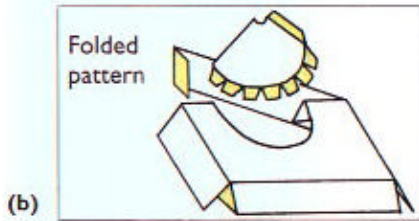
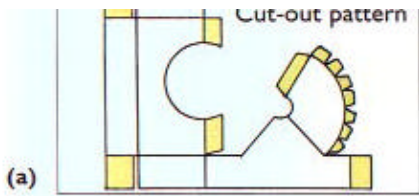


Volcano Model



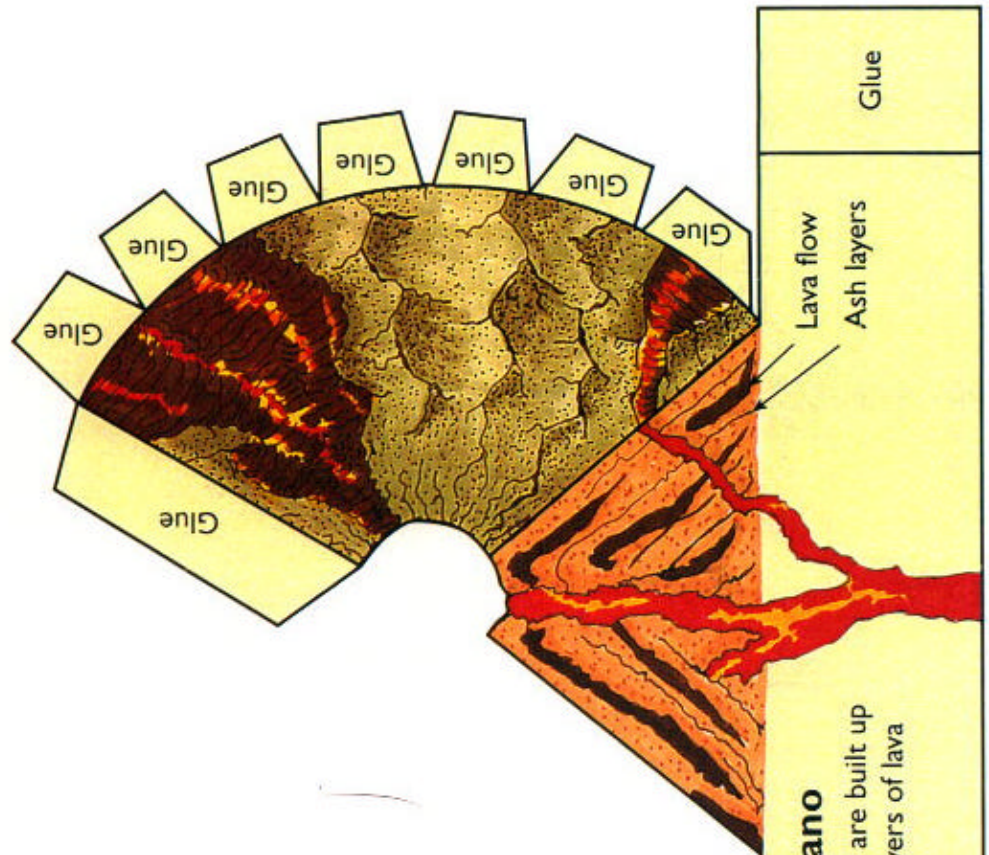
Cut out the paper volcano model by cutting along all its outside edges.

Fold the pattern as shown in the diagrams above, so the printed side faces outward.

Try the pieces for fit before applying glue or tape.

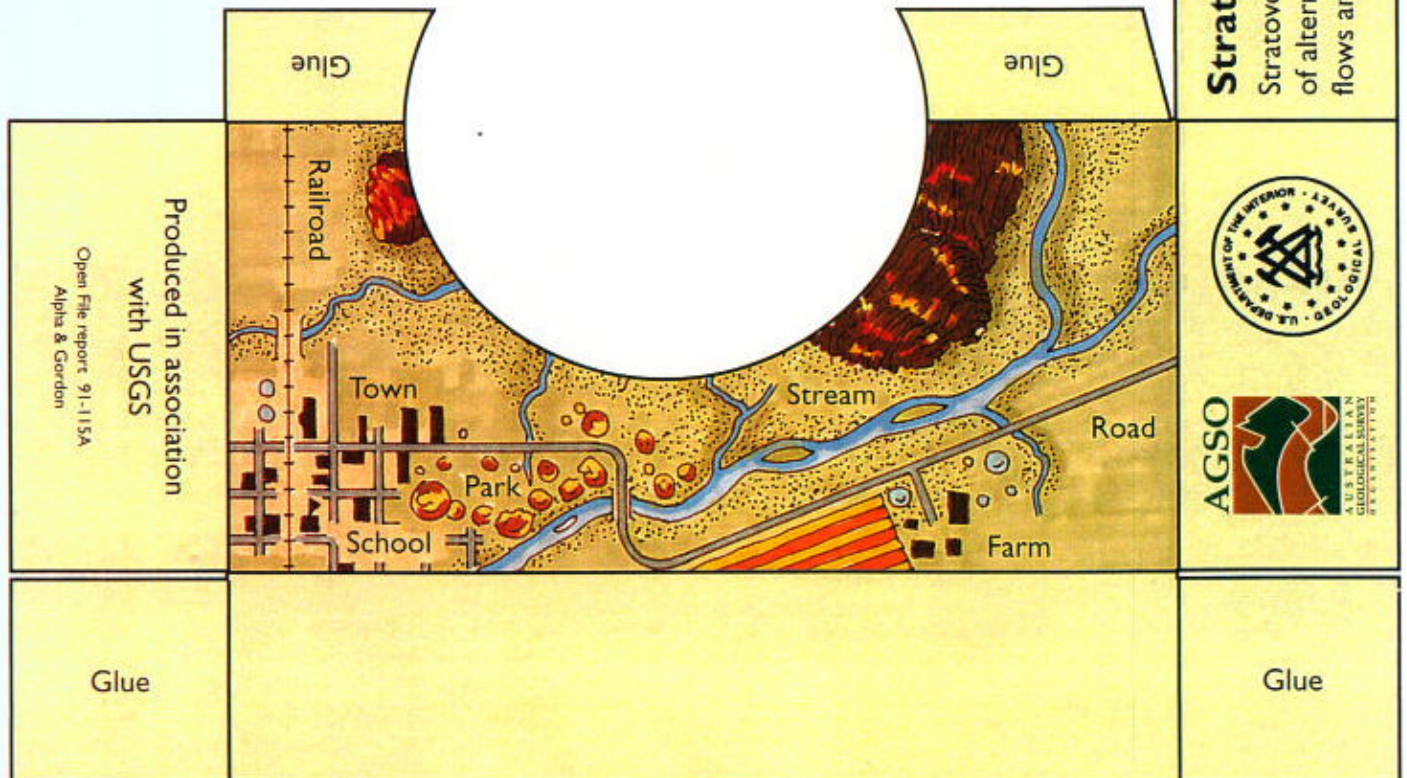
Glue or tape the tabs as indicated.

Your completed model should look like drawing (c).



Stratovolcano

Stratovolcanoes are built up of alternating layers of lava flows and ash.



Produced in association with USGS
Open File report 91-115A
Alpha & Gordon

